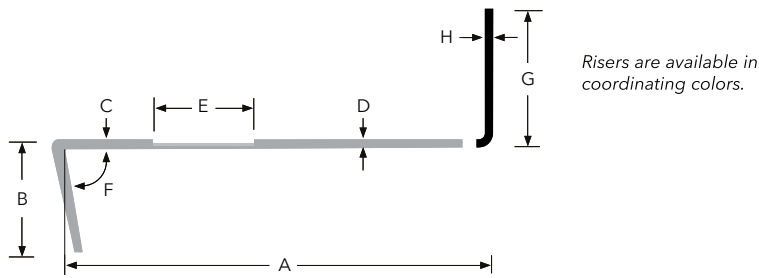




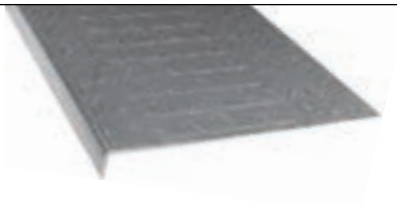
community
stairway systems

Suburban Speckled Stair Treads & Risers

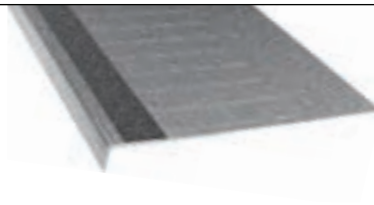


Square Profile | Square Nose & Visually Impaired*

A = 13"
 B = 1.813"
 C = .18"
 D = .13"
 F = 80°
 G = 7"
 H = .125"



A = 13"
 B = 1.813"
 C = .18"
 D = .13"
 E = 2"
 F = 80°
 G = 7"
 H = .125"



Sculptured Profile | Square Nose & Visually Impaired*

A = 13"
 B = 1.813"
 C = .18"
 D = .13"
 F = 80°
 G = 7"
 H = .125"



A = 13"
 B = 1.813"
 C = .18"
 D = .13"
 E = 2"
 F = 80°
 G = 7"
 H = .125"



Technical Data

PRODUCT	LENGTHS	VI STRIPS	PROFILE
1/8" Square Profile	3', 4', 5', 6'	Optional	Square
1/8" Sculptured Profile	3', 4', 5', 6'	Optional	Sculptured
1/8" Risers (7" height w/toe) 1/8"	3', 4', 5', 6'	n/a	none
Risers (6" Cove)	4'	n/a	none
1/8" Skirting (10" toeless base)	4'	n/a	none

Applicable Standards: Treads: ASTM F2169, Type TS, Class 2, Group 1 & 2

Risers & Skirting: ASTM F1861, Type TS, Group 1, Style A & B

Indentation Resistance: ASTM F970 - .000" residual indent at 600 PSI

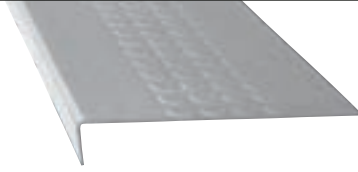
Flame Resistance: ASTM E648, Class 1



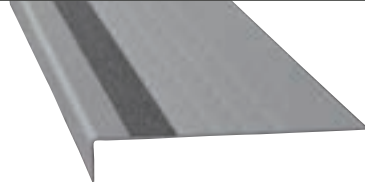
Suburban Solid Stair Treads & Risers

Round Profile | Square Nose & Visually Impaired*

A = 13"
B = 1.813"
C = .18"
D = .13"
F = 80°

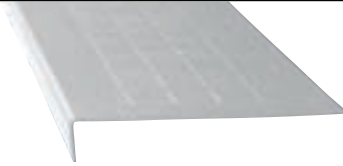


A = 13"
B = 1.813"
C = .18"
D = .13"
E = 2"
F = 80°

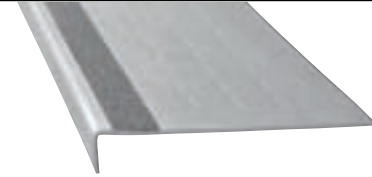


Square Profile | Square Nose & Visually Impaired*

A = 13"
B = 1.813"
C = .18"
D = .13"
F = 80°



A = 13"
B = 1.813"
C = .18"
D = .13"
E = 2"
F = 80°



Sculptured Profile | Square Nose & Visually Impaired*

A = 13"
B = 1.813"
C = .18"
D = .13"
F = 80°



** Refer to architect folder for actual texture and color*

A = 13"
B = 1.813"
C = .18"
D = .13"
E = 2"
F = 80°



** Refer to architect folder for actual texture and color*

Technical Data

PRODUCT	LENGTHS	VI STRIPS	PROFILE
1/8" Round Profile	3', 4', 5', 6'	Optional	Round
1/8" Square Profile	3', 4', 5', 6'	Optional	Square
1/8" Sculptured Profile	3', 4', 5', 6'	Optional	Sculptured
1/8" Risers (7" height w/toe) 1/8" Risers (6" Cove)	3', 4', 5', 6'	n/a	None
1/8" Skirting (10" toeless base)	4'	n/a	None
	4'	n/a	None

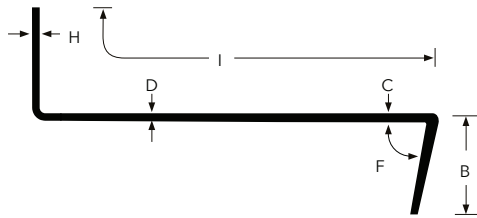
Applicable Standards: Treads: ASTM F2169, Type TS, Class 2, Group 1 & 2
Risers & Skirting: ASTM F1861, Type TS, Group 1, Style A & B
Indentation Resistance: ASTM F970 - .000" residual indent at modified 600 PSI
Flame Resistance: ASTM E648, Class 1

Seamless Step

Seamless Step Single Piece Stair Tread and Riser Combination: Square Nose and Visually Impaired

Seamless Step speeds installation, reduces maintenance and provides a uniform, seamless and contoured look. Seamless Step automatically adjusts for step depths of between 9.5 inches and 13 inches. This also allows

for adjustments to varying riser heights. Available in Suburban Speckled's Sculptured Profile and Suburban Solid's Round or Sculptured Profiles with optional VI strip inserts.



B = 1.88"
C = .188"
D = .188"
F = 80°
H = .080"
I = 20"



Superior Rubber Formulation

- Superior indentation resistance, color retention and slip-resistance
- Superior scratch-resistance due to low clay and high pigment content
- Quieter underfoot

Built-in, Long Lasting Migrating Wax

- No wax required, low maintenance option
- Self-waxing feature for superior appearance retention
- Lower life cycle costs

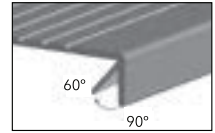
Superior Profile Design

- Profile design allows for enhanced cleanability
- Available with or without visually impaired strip

Horizon Series

Flexible Nose For Easy Compliance

All Horizon Series Stair Treads have a notch behind the nose for increased flexibility. The ADA requires nosing angles to be between 60° and 90° from the horizontal. This product modification will allow the nosing position of these products to more easily conform to the steps' nosings that have been built to the severest angle allowed by the ADA (60°).

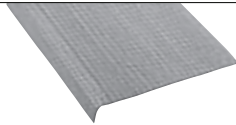


ADA



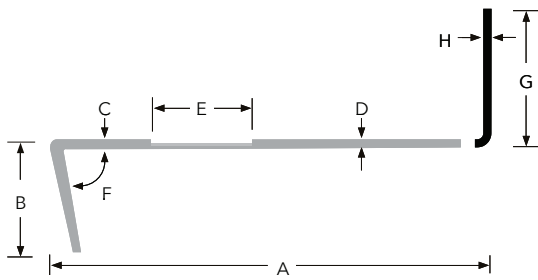
Commercial Vinyl Tread - Light Traffic | Vinyl Only

A = 12"
B = 1.5"
C = .15"
D = .125"

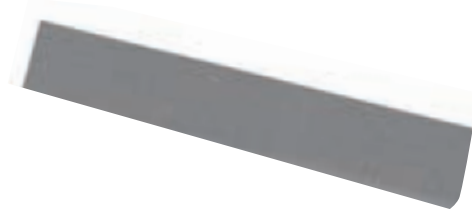


**Full Depth
Corrugation**

Risers



Risers are available in coordinating colors.



Technical Data

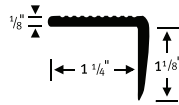
PRODUCT	LENGTHS	VI STRIPS	PROFILE
1/8" Risers (7" height w/ toe) 1/8" Risers (6" Cove)	3', 4', 5', 6' 4'	n/a n/a	Smooth Smooth

Stair Nosings

110 Top-Set Nosing (Square Nose)

Covers leading edge of step. May be used over vinyl and sheet goods.

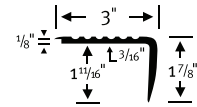
Packing: 20-12' secs., 240 lin. ft. per carton



140 Overlap Stair Nosing

Nosing with deep grooves and overlap lip. Accepts material to 1/8" with lip, to 3/16" without lip.

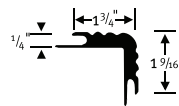
Packing: 10-12' secs., 120 lin. ft. per carton



125 Double Undercut Carpet Stair Nosing

For 1/4" and 5/16" carpet. Accommodates step and riser; with ribbed surface.

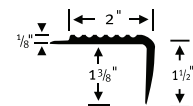
Packing: 10-12' secs., 120 lin. ft. per carton



145 Commercial Step Nosing

Square step nosing for 1/8" material. Ribbed surface.

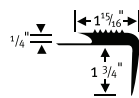
Packing: 10-12' secs., 120 lin. ft. per carton



135 Superior Carpet Stair Nosing

Friction-Grip nosing for use when only step is covered. Undercut for 1/4" and 5/16" carpet.

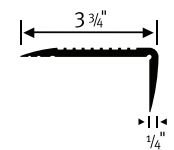
Packing: 10-12' secs., 120 lin. ft. per carton



150 Top-Set Nosing for 1/4", 1/8" or .080" Material

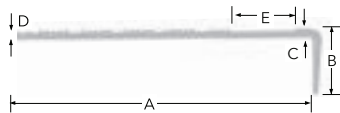
Ribbed surface nosing can be cut along pre-grooved channels to adjoin 1/4", 1/8" or .080" resilient flooring materials.

Packing: 10-12' secs., 120 lin. ft. per carton



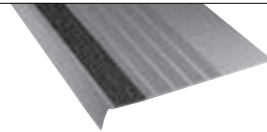
Visually Impaired Treads & Nosings

Visually Impaired Vinyl Safety Treads meet California Disabled Access Regulation, Title 24, Section 3306 for the visually impaired when used with contrasting strip color. Available in any of the 36 Coordination System colors and the 10 Abrasive Strip Insert colors below. Tape may be ordered separately for on-site installations.



Design: 2" (50.800 mm) Abrasive Strip

A = 12"
 B = 1.625"
 C = .25"
 D = .125"
 E = 2"



Gray



Yellow



White



Orange



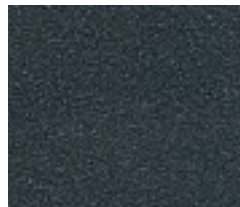
Red



Brick



Brown



Black



Hazard



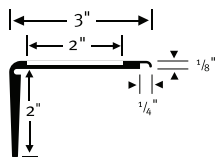
Photoluminescent

Visually Impaired Safety Nosings

225 Visual Abrasive Safety Nosing for 1/8" Material

Visual Abrasive Safety Nosing for 1/8" Material. Pick a color for the nosing from the 36 Coordination colors and a color from the 10 abrasive tape colors.

Packing: 10-12' secs., 120 lin. ft. per carton



GLUE DOWN